

# Garbage Disposal Guide for Foreign Residents

English

Rules for Putting Out Garbage

P1 ▶

Items that cannot be disposed of at the garbage collection point

P2 ▶

Burnable Garbage

P3 ▶

Non-burnable Garbage

P4 ▶

Bottles/Cans

P5 ▶

Plastic Bottles

P6 ▶

Paper/Fabric

P7 ▶

Oversized Garbage

P8 ▶

Four Specific Home Appliances

P9 ▶

WHY?!

P10 ▶

## How to Separate and Dispose of Garbage in Saga City



01

# Rules for Putting Out Garbage

Burnable  
GarbageNon-burnable  
Garbage

Bottles/Cans

Plastic Bottles

Paper

Fabric

(1) Separate!



(2) Buy!

Designated bag

Paper  
string

Bag



You can buy these items at supermarkets and convenience stores.

(3) Tie up!

(4) Check the  
Collection  
Date!Twice  
a week

Twice a month



The collection dates differ depending on where you live, so please check **the Garbage Calendar**. Garbage Calendars are available from Saga City Hall and Saga City Waste Incineration Plant.

(5) On the collection day, please take your garbage to the garbage collection point by **8:30 in the morning!**



Check the location of the garbage collection point in the area where you live.

If you have any problems with garbage disposal, don't know how to dispose of your garbage, or cannot dispose of your garbage, ask friends or neighbors or the Saga City Waste Incineration Plant.

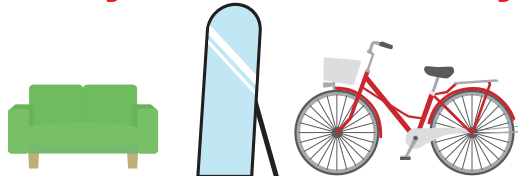
Saga City Waste Incineration Plant ☎0952-30-2430 ✉junkan@city.saga.lg.jp

# Prohibited

**You must not dispose of these items at the garbage collection point!**

## Oversized Garbage

Garbage that will not fit in a bag



Please see **page 8** for how to dispose of these items.

## Four Specific Home Appliances



TVs



Air conditioners



Refrigerators



Washing machines

Please see **page 9** for how to dispose of these items.

## Computers



Please call the Association for Promotion of Personal Computer 3R.

☎03-5282-7685  
<http://www.pc3r.jp>

## Items with needles



Hypodermic needles

Please return hypodermic needles to a hospital or pharmacy.



## Others

### Example items



Large pieces of wood



Tree roots



Hub caps



Tires



Chemicals

Agricultural chemicals



Fire extinguishers



Gas cylinders



Paint



Blocks, bricks, etc.



Soil



Motorbikes larger than 50cc

- I want to find a company who can dispose of my item.
- I do not know if my item can be disposed of at the garbage collection point.

At this time...

**Please contact Saga City Waste Incineration Plant by email or phone.**

☎0952-30-2430

✉ [junkan@city.saga.lg.jp](mailto:junkan@city.saga.lg.jp)



# Burnable Garbage

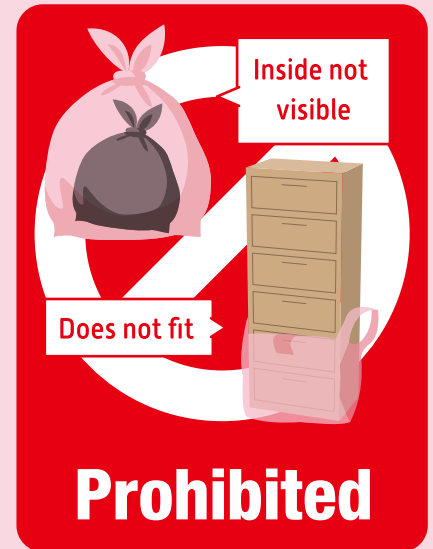


Here, we show how to dispose of burnable garbage.

**1** Buy a designated bag



**2** Put the garbage in the bag and tie it up



- Organic garbage **Large amount of water**



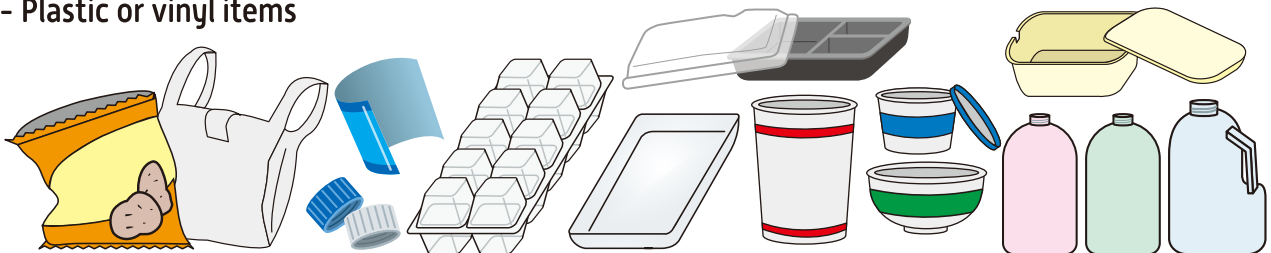
- Rubber items



- Leather items



- Plastic or vinyl items



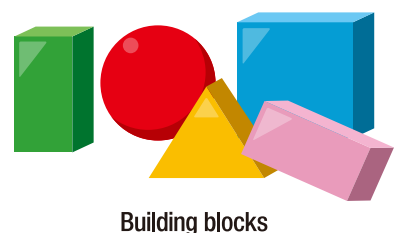
- Waste paper



- Fabric waste



- Wooden items





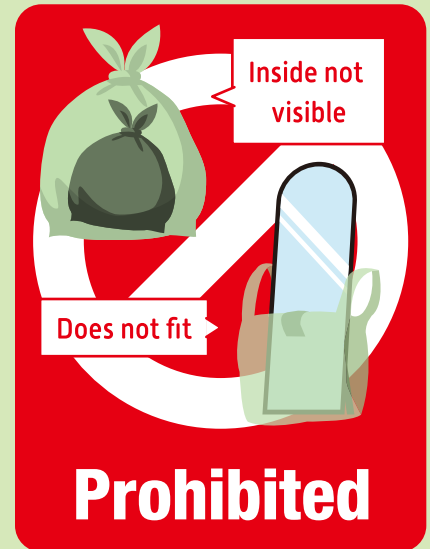
Here, we show  
how to dispose of  
non-burnable garbage.

# Non-burnable Garbage

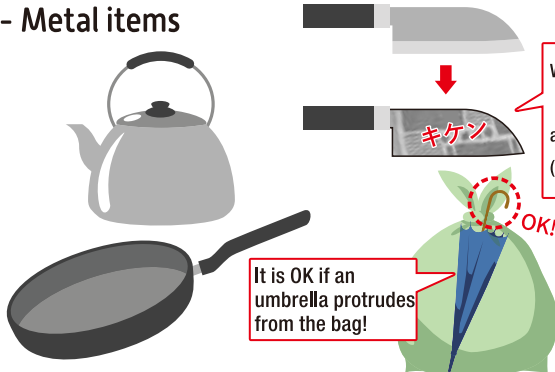
**1** Buy a designated  
bag



**2** Put the garbage in  
the bag and tie it up



- Metal items



Wrap dangerous items  
in newspaper, etc.  
and write "キケン"  
(meaning DANGER)

- Plates and cups



Unbroken items



- Small  
appliances



- Light bulbs



- Spray cans,  
lighters

These items  
should be  
empty



**Batteries**

- Batteries



- Coin  
batteries



- Button  
batteries



- Rechargeable  
batteries



- Mobile phone  
batteries



**(1) Place these  
items in a  
transparent  
bag**



**(2)**  
Put the item out on  
the collection day  
for non-burnable  
garbage.



**Fluorescent  
Tubes/  
Thermometers**  
(Items containing  
mercury)



- Fluorescent tubes



- Mercury thermometers

**(1) Place these items  
in a transparent bag**

It is OK to put the item in  
its original box!



**(2)**  
Put the item out on  
the collection day  
for non-burnable  
garbage.



**Mercury is harmful. Be careful not to break the glass!**

# Bottles/Cans



Here, we show  
how to dispose of  
bottles and cans.

- 1 Buy a designated bag
- 2 Wash the inside
- 3 Put the garbage in the bag and tie it up



Wash!



You can put bottles and cans  
together in the same bag.

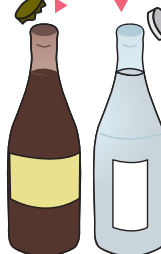
## Bottles



- Jam bottles



- Alcohol bottles



Plastic lids are  
burnable garbage!



- Seasoning bottles

## Cans



Only food and drinks cans!

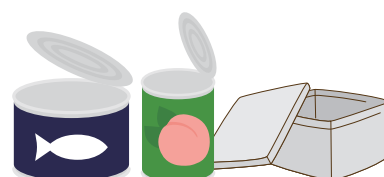
- Drinks cans



Look for these symbols



- Food cans





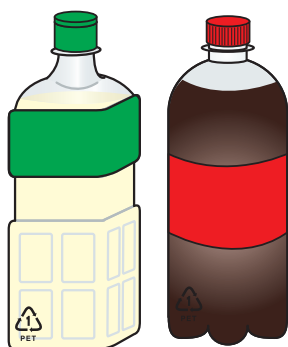
# Plastic Bottles

Here, we show how to dispose of plastic bottles.

- 1 Buy a designated bag
- 2 Remove the cap and label
- 3 Wash the inside
- 4 Put the bottles in the bag and tie it up



- Plastic drinks bottles



- Plastic seasoning bottles



Look for these symbols



The cap and label are burnable garbage!



We have so many plastic bottles with caps and labels and we don't have time to remove them all. Please remove them before disposal.



We cannot recycle them with the caps and labels on...

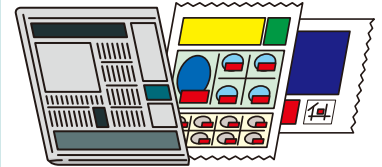
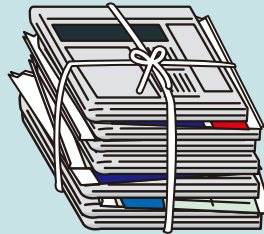
# Paper/Fabric



Here, we show how to dispose of paper and fabric.

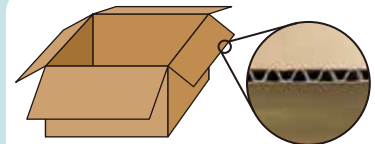
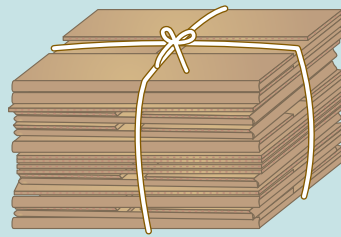
## Newspapers/Flyers

Tie up with paper string



## Cardboard

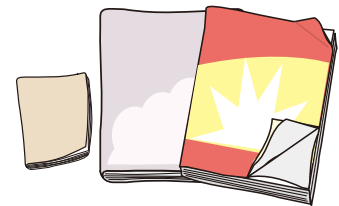
Tie up with paper string



 Corrugated items are classed as cardboard

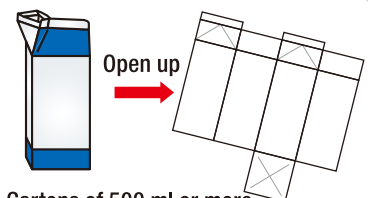
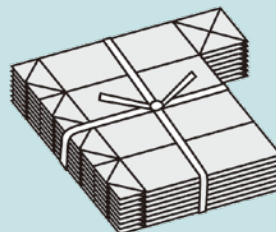
## Magazines/Books

Tie up with paper string



## Paper cartons such as for milk

Tie up with paper string



Cartons of 500 ml or more

## Paper Items Other than the above four

1. Put the items in a paper bag
2. Tie up with paper string from the top of the bag



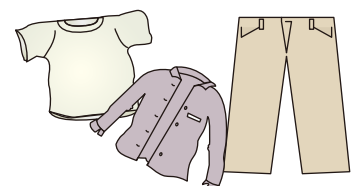
Unevenly shaped paper items



Toilet paper or plastic wrap tubes

## Fabric products

Place these items in a transparent bag







# Bulky Garbage

Here, we show how to dispose of bulky garbage.

## Garbage that will not fit in a bag



**You must not dispose of these items at the garbage collection point!**



## There are three disposal methods

### 1 Sticker System

Put the garbage out on the fixed date **once a month**

\* The collection dates differ depending on where you live, so please check the garbage schedule.

1. Buy a **bulky garbage sticker** at the post office or bank.



Buy



500 yen for one sticker

2. **Affix** the sticker to your item.



Affix!

3. **Place the item outside your house by 8:30 am** on the collection day.



The contractor will call you by the day before the collection day!



### 2 Special Collection

Decide the collection date with the contractor and have them collect your item

1. Find a contractor.

**Please call Saga City Waste Incineration Plant. ☎0952-30-2430**

2. Place the item outside your house on the collection day.

Meet the contractor

\* You must **be present** on the collection day.



3200 yen to 9600 yen



### 3 Take the Item Yourself

Take your item to Saga City Waste Incineration Plant

1. Take your item to Saga City Waste Incineration Plant **yourself** within the reception hours.



**Saga City Waste Incineration Plant**

Address: 2369 Oaza Nagase, Takakise-machi, Saga  
☎0952-30-2430

[Service hours] \* Reservation is required to use the service on Saturday and public holidays.

- Monday to Friday ..... 8:30 am to 5 pm (same on public holidays)
- Saturday ..... 8:30 am to 12 pm (same on public holidays)
- Sundays ..... Closed



400 yen for up to 50 kg

# Four Specific Home Appliances



Here, we show how to dispose of four specific home appliances.



**You must not dispose of these items at the garbage collection point!**

TVs



Air conditioners



Refrigerators



Washing machines



## There are three disposal methods

### 1 Ask an Electrical Appliance Store

1. Have a nearby electrical appliance store dispose of the item.



Please contact at the store



### 2 Ask Saga City Waste Incineration Plant

Have them come and collect your item on the fixed date **once a month**

\* The collection dates differ depending on where you live, so please check the Garbage Calendar.

1. Buy a **Home Appliance Recycling Ticket** and **Home Appliance Application Form** at the post office.



Buy

Home Appliance Recycling Ticket



The price depends on the type

Saga City Home Appliance Application Form



3,000 yen for one ticket



Find out the prices for Home Appliance Recycling Tickets from the Home Appliance Recycling Center!

<https://www.rkc.aeha.or.jp> ☎0120-319640

2. Place the item outside your house on the collection day.

\* You must **be present** on the collection day.



Meet the contractor



Place the item outside your house

### 3 Take your Item Yourself

Take your item to Saga City Waste Incineration Plant

1. Buy a **Home Appliance Recycling Ticket** at the post office.



Buy

Home Appliance Recycling Ticket



The price depends on the type



Find out the prices for Home Appliance Recycling Tickets from the Home Appliance Recycling Center!

☎0120-319640

<https://www.rkc.aeha.or.jp>

2. Take your item to Kyushu Sankyo-Unyu Co., Ltd. Saga City Office **yourself**.



Kyushu Sanko-Unyu Co.,Ltd.

**Kyushu Sanko-unyu Co.,Ltd.**

Address: 3152 Oaza Yae, Nabeshima-machi, Saga

☎0952-40-0077

Closed on Sundays and public holidays

# WHY JAPANESE PEOPLE!?

Why!? Why is garbage separated in Japan?

## In Japan...

- There is little space for landfill
- There are few resources



## Concept of 3R

Reduce - reduce garbage

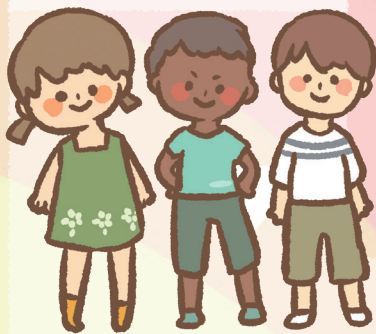
Reuse - reuse garbage

Recycle - recycle garbage

The spirit of avoiding waste  
**“MOTTAINAI”**



Garbage is  
an important  
**“resource”**!



It seems that the way people dispose of garbage is different in each country. Let's learn together to find out more about each other!

I was surprised to see that there are many kinds of garbage bags!



It is unusual for countries to separate garbage in so much detail.

Japan has a lot of complex rules for garbage disposal. It's difficult...



In my country, you don't have to separate garbage. You can put organic garbage, bottles, and cans together.

In my country, there are people who buy back bottles, cans, and other recyclable items so I sell them.



The cities in Japan are so clean! There is little garbage on the roads. I was surprised.

I was surprised that I have to pay to put out garbage!



In my country, you can put garbage out anytime. It's inconvenient in Japan because the time is fixed.

I think that many people in Japan follow the rules properly. It's amazing.

