

Garbage Disposal Guide for Foreign Residents

English

Rules for Putting Out Garbage P1 ▶

Items that cannot be disposed of at the garbage collection point P2 ▶

Burnable Garbage P3 ▶

Non-burnable Garbage P4 ▶

Bottles/Cans P5 ▶

Plastic Bottles P6 ▶

Paper/Fabric P7 ▶

Oversized Garbage P8 ▶

Four Specific Home Appliances P9 ▶

WHY?! P10 ▶

How to Separate and Dispose of Garbage in Saga City



01

Rules for Putting Out Garbage

Burnable Garbage

Non-burnable Garbage

Bottles/Cans

Plastic Bottles

Paper

Fabric

(1) Separate!



Designated bag

(2) Buy!



Paper string



Bag



You can buy these items at supermarkets and convenience stores.

(3) Tie up!



Twice a week

Twice a month

(4) Check the Collection Date!



The collection dates differ depending on where you live, so please check the **Garbage Calendar**. Garbage Calendars are available from Saga City Hall and Saga City Waste Incineration Plant.

(5) On the collection day, please take your garbage to the garbage collection point by **8:30 in the morning!**



Check the location of the garbage collection point in the area where you live.

If you have any problems with garbage disposal, don't know how to dispose of your garbage, or cannot dispose of your garbage, ask friends or neighbors or the Saga City Waste Incineration Plant.

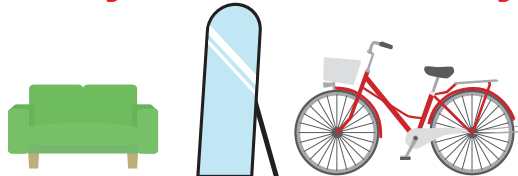
Saga City Waste Incineration Plant ☎0952-30-2430 ✉junkan@city.saga.lg.jp

Prohibited

You must not dispose of these items at the garbage collection point!

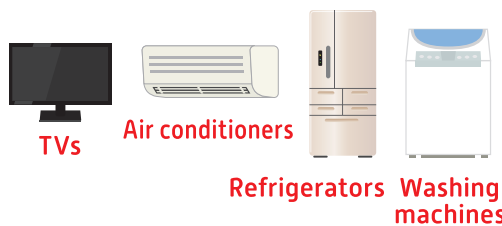
Oversized Garbage

Garbage that will not fit in a bag



Please see **page 8** for how to dispose of these items.

Four Specific Home Appliances



Please see **page 9** for how to dispose of these items.

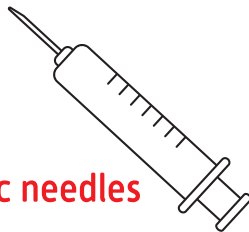
Computers



Please call the Association for Promotion of Personal Computer 3R.

☎03-5282-7685
<http://www.pc3r.jp>

Items with needles



Hypodermic needles

Please return hypodermic needles to a hospital or pharmacy.



Others

Example items



- I want to find a company who can dispose of my item.
- I do not know if my item can be disposed of at the garbage collection point.

At this time...

Please contact **Saga City Waste Incineration Plant** by email or phone.

☎0952-30-2430
 ✉ junkan@city.saga.lg.jp

Burnable Garbage



Here, we show how to dispose of burnable garbage.

1 Buy a designated bag



2 Put the garbage in the bag and tie it up



- Organic garbage **Large amount of water**



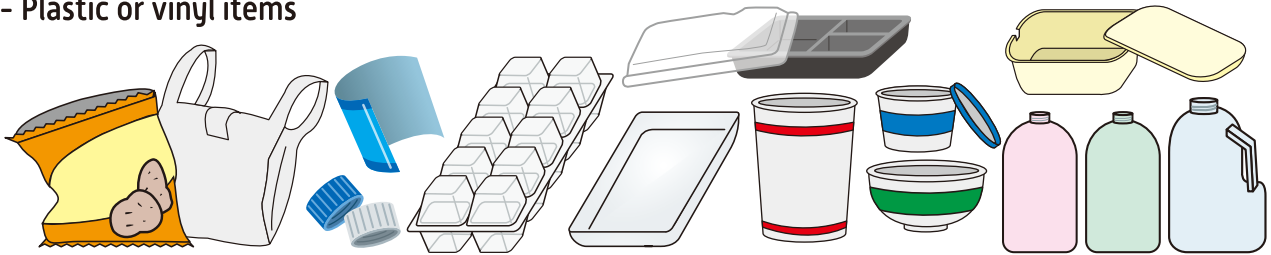
- Rubber items



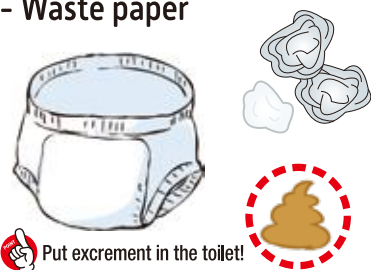
- Leather items



- Plastic or vinyl items



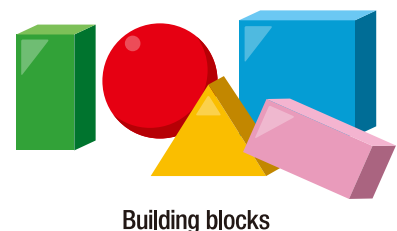
- Waste paper



- Fabric waste



- Wooden items





Non-burnable Garbage

04

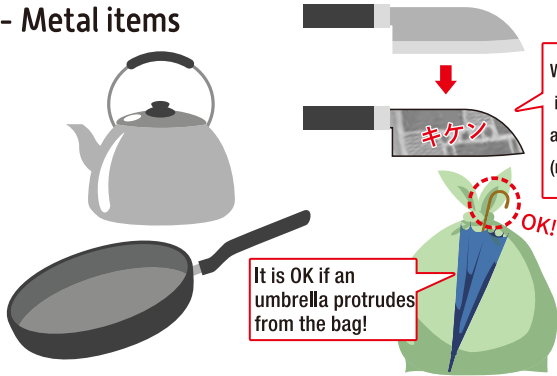
Here, we show how to dispose of non-burnable garbage.

1 Buy a designated bag

2 Put the garbage in the bag and tie it up



- Metal items



It is OK if an umbrella protrudes from the bag!

Wrap dangerous items in newspaper, etc. and write "キケン" (meaning DANGER)

- Plates and cups



Unbroken items



- Small appliances



- Light bulbs



- Spray cans, lighters

These items should be empty



Batteries

- Batteries



- Coin batteries



- Button batteries



- Rechargeable batteries



- Mobile phone batteries

(1) Place these items in a transparent bag



(2) Put the item out on the collection day for non-burnable garbage.



Fluorescent Tubes/ Thermometers

(Items containing mercury)



- Fluorescent tubes



- Mercury thermometers

(1) Place these items in a transparent bag

It is OK to put the item in its original box!



(2) Put the item out on the collection day for non-burnable garbage.



Mercury is harmful. Be careful not to break the glass!

Bottles/Cans



Here, we show how to dispose of bottles and cans.

1 Buy a designated bag

2 Wash the inside

3 Put the garbage in the bag and tie it up



POINT You can put bottles and cans together in the same bag.

Bottles



- Jam bottles



- Alcohol bottles



- Seasoning bottles

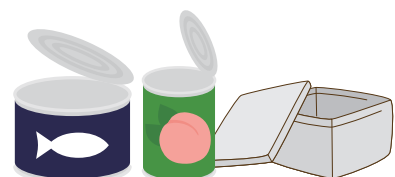
Cans

POINT Only food and drinks cans!

- Drinks cans



- Food cans





Plastic Bottles

Here, we show how to dispose of plastic bottles.

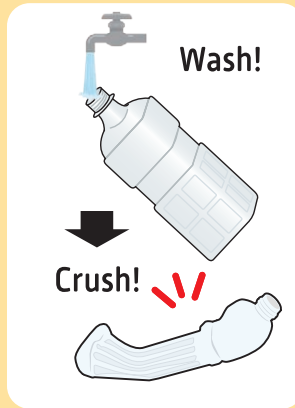
1 Buy a designated bag



2 Remove the cap and label



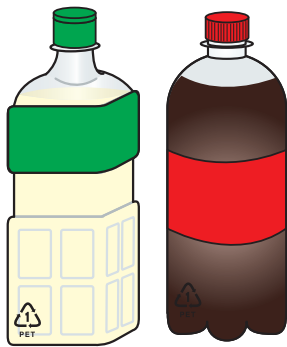
3 Wash the inside



4 Put the bottles in the bag and tie it up



- Plastic drinks bottles



- Plastic seasoning bottles



Look for these symbols



The cap and label are burnable garbage!



We have so many plastic bottles with caps and labels and we don't have time to remove them all. Please remove them before disposal.



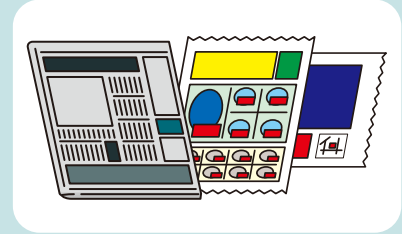
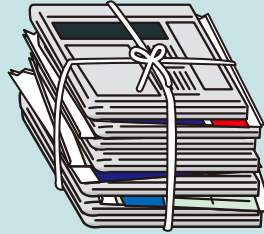
Paper/Fabric



Here, we show how to dispose of paper and fabric.

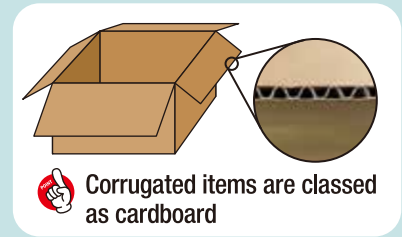
Newspapers/Flyers

Tie up with paper string



Cardboard

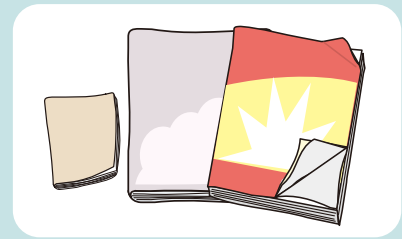
Tie up with paper string



 Corrugated items are classed as cardboard

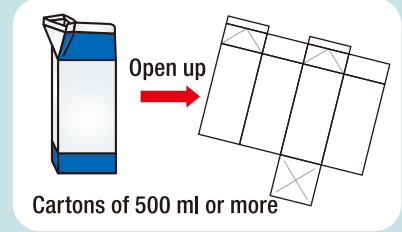
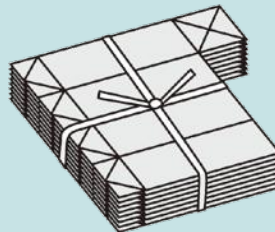
Magazines/Books

Tie up with paper string



Paper cartons such as for milk

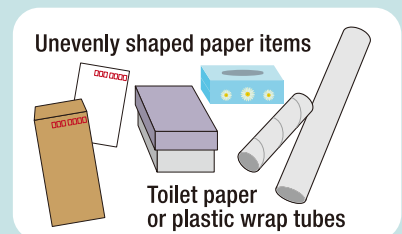
Tie up with paper string



Cartons of 500 ml or more

Paper Items Other than the above four

1. Put the items in a paper bag
2. Tie up with paper string from the top of the bag



Unevenly shaped paper items

Toilet paper or plastic wrap tubes

Fabric products

Place these items in a transparent bag



Bulky Garbage

Garbage that will not fit in a bag



You must not dispose of these items at the garbage collection point!



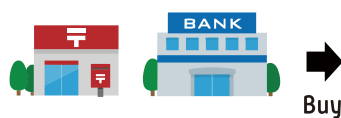
There are three disposal methods

1 Sticker System

Put the garbage out on the fixed date **once a month**

* The collection dates differ depending on where you live, so please check the garbage schedule.

1. Buy a **bulky garbage sticker** at the post office or bank.



Buy



Affix!

2. **Affix** the sticker to your item.



3. **Place the item outside your house by 8:30 am** on the collection day.



The contractor will call you by the day before the collection day!

2 Special Collection

Decide the collection date with the contractor and have them collect your item

1. Find a contractor.

Please call Saga City Waste Incineration Plant. ☎0952-30-2430

2. Place the item outside your house on the collection day.

Meet the contractor

* You must **be present** on the collection day.

3200 yen to 9600 yen



3 Take the Item Yourself

Take your item to Saga City Waste Incineration Plant

1. Take your item to Saga City Waste Incineration Plant **yourself** within the reception hours.



Saga City Waste Incineration Plant

Address: 2369 Oaza Nagase, Takakise-machi, Saga
☎0952-30-2430

[Service hours] * Reservation is required to use the service on Saturday and public holidays.

- Monday to Friday 8:30 am to 5 pm (same on public holidays)
- Saturday 8:30 am to 12 pm (same on public holidays)
- Sundays Closed

400 yen for up to 50 kg

Four Specific Home Appliances



Here, we show how to dispose of four specific home appliances.



You must not dispose of these items at the garbage collection point!

TVs



Air conditioners



Refrigerators



Washing machines



There are three disposal methods

1 Ask an Electrical Appliance Store

1. Have a nearby electrical appliance store dispose of the item.



Please contact at the store



2 Ask Saga City Waste Incineration Plant

Have them come and collect your item on the fixed date **once a month**

* The collection dates differ depending on where you live, so please check the Garbage Calendar.

1. Buy a **Home Appliance Recycling Ticket** and **Home Appliance Application Form** at the post office.



Buy



The price depends on the type



3,000 yen for one ticket



Find out the prices for Home Appliance Recycling Tickets from the Home Appliance Recycling Center!

<https://www.rkc.aeha.or.jp> ☎0120-319640

2. Place the item outside your house on the collection day.

* You must **be present** on the collection day.



3 Take your Item Yourself

Take your item to Saga City Waste Incineration Plant

1. Buy a **Home Appliance Recycling Ticket** at the post office.



Buy



The price depends on the type

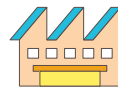


Find out the prices for Home Appliance Recycling Tickets from the Home Appliance Recycling Center!

☎0120-319640

<https://www.rkc.aeha.or.jp>

2. Take your item to Kyushu Sankyo-Unyu Co., Ltd. Saga City Office **yourself**.



Kyushu Sanko-Unyu Co.,Ltd.

Kyushu Sanko-unyu Co.,Ltd.

Address: 3152 Oaza Yae, Nabeshima-machi, Saga

☎0952-40-0077 Closed on Sundays and public holidays

WHY JAPANESE PEOPLE!?

Why!? Why is garbage separated in Japan?

In Japan...

- There is little space for landfill
- There are few resources



Concept of 3R

Reduce - reduce garbage

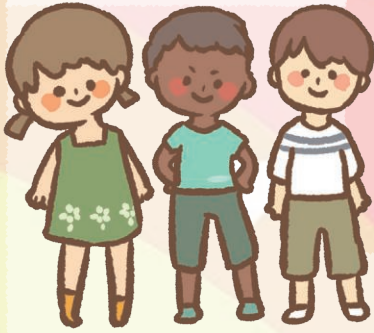
Reuse - reuse garbage

Recycle - recycle garbage

The spirit of avoiding waste
“MOTTAINAI”

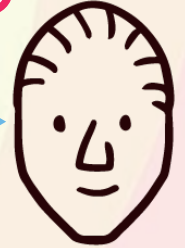


Garbage is an important
“resource”!

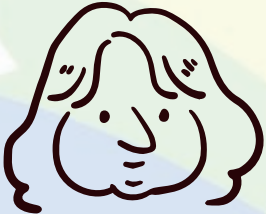


It seems that the way people dispose of garbage is different in each country. Let's learn together to find out more about each other!

I was surprised to see that there are many kinds of garbage bags!



It is unusual for countries to separate garbage in so much detail.



Japan has a lot of complex rules for garbage disposal. It's difficult...



In my country, you don't have to separate garbage. You can put organic garbage, bottles, and cans together.



In my country, there are people who buy back bottles, cans, and other recyclable items so I sell them.



The cities in Japan are so clean! There is little garbage on the roads. I was surprised.



I was surprised that I have to pay to put out garbage!



In my country, you can put garbage out anytime. It's inconvenient in Japan because the time is fixed.



I think that many people in Japan follow the rules properly. It's amazing.



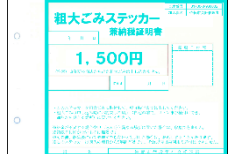
Application Method for Scheduled Collection (Sticker Method)



Applying via Phone



- ① Look up the name and size of the oversized garbage you want to throw away
- ② Phone the Saga City Garbage Reservation Center
☎0952-20-0609 (Operating hours: weekdays 9am to 16pm)
- ③ They will tell you the reception number (uketsuke bangō), cost (¥500, ¥1000 or ¥1500) and collection date. Write it on a piece of paper.
- ④ Buy an oversized garbage sticker of that value (¥500, ¥1000 or ¥1500) by the end of the month (not available on weekends) at a financial institution (bank or post office)



- ⑤ Stick the sticker of the appropriate value on the oversized garbage
- ⑥ Place it outside at the entrance of your building by 8:30am on collection day



Applying via Internet



- ① Look up the name and size of the oversized garbage you want to throw away.
- ② Apply from the Saga City website (QR code)
- ③ Choose a payment method



◎ Online payment

- Pay with credit card or PayPay
- Write the reception number on a A5~A4 sized paper
- Securely stick that paper on the oversized garbage
- Put it out at the entrance of your building by 8:30 on collection day

◎ Financial institution (bank or post office)

- Buy an oversized garbage sticker of that value (¥500, ¥1000 or ¥1500) by the end of the month (not available on weekends)
- Put the sticker with the appropriate value on the oversized garbage
- Put it out at the entrance of your building by 8:30 on collection day

✘Please note:

- It cannot be collected if the sticker value is incorrect
- It cannot be collected if the item is incorrect
- It cannot be collected if it is not put out at the entrance of the building by 8:30am
 - ✘It cannot be collected if you put it out late
- If you are unable to request collection via the internet, please request it via phone
- If you want to cancel your request, please call them immediately.
 - ✘If you cancel it, you can still use the sticker within 5 years